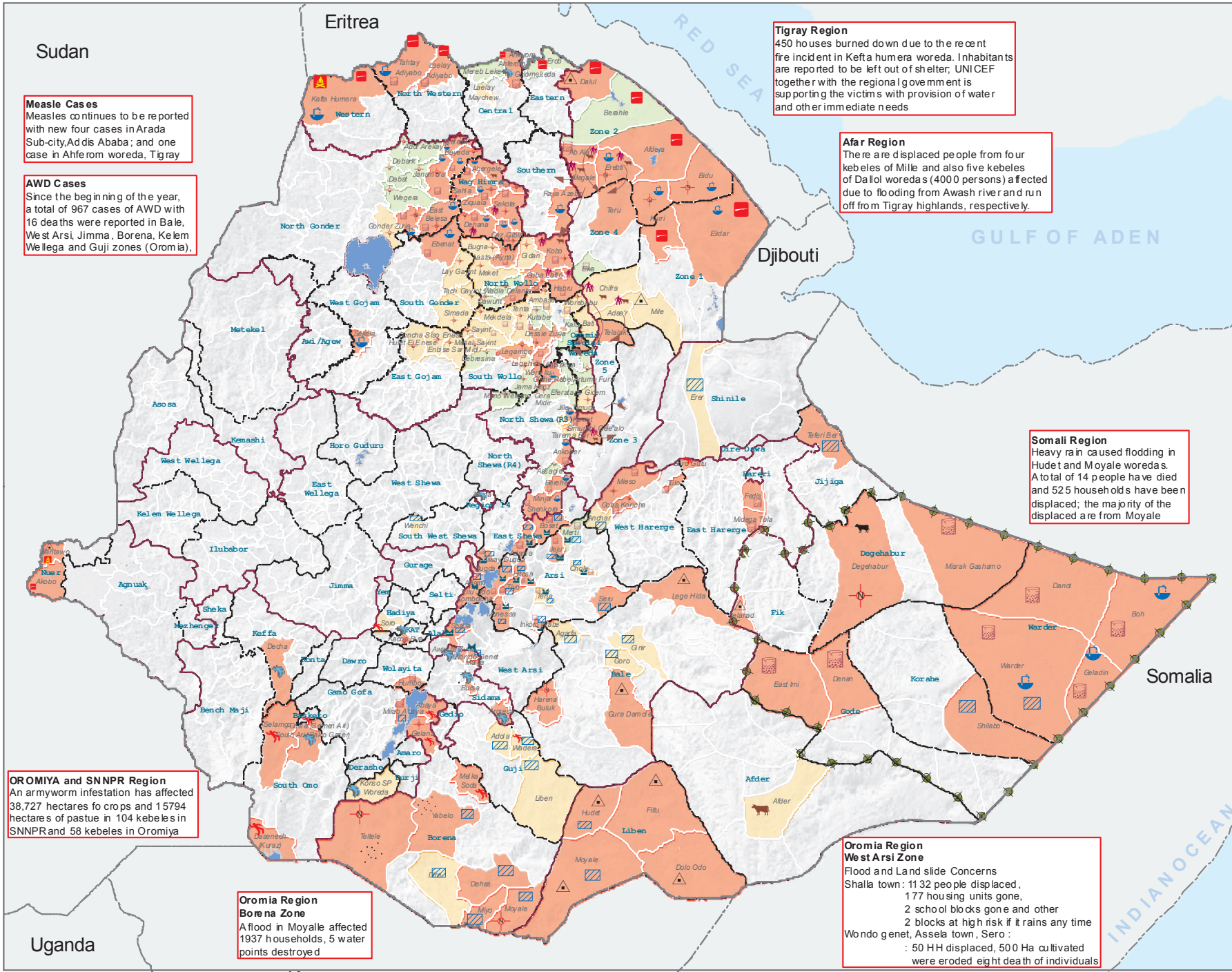


ETHIOPIA - National Hot Spot Map

31 May 2010



Sudan

Eritrea

RED SEA

GULF OF ADEN

Djibouti

Somalia

Measles Cases
Measles continues to be reported with new four cases in Arada Sub-city, Addis Ababa; and one case in Anherom woreda, Tigray

AWD Cases
Since the beginning of the year, a total of 967 cases of AWD with 16 deaths were reported in Bale, West Arsi, Jimma, Borena, Kelem Wellega and Guji zones (Oromiya).

Tigray Region
450 houses burned down due to the recent fire incident in Kefta humera woreda. Inhabitants are reported to be left out of shelter; UNICEF together with the regional government is supporting the victims with provision of water and other immediate needs

Afar Region
There are displaced people from four kebeles of Mile and also five kebeles of Dalol woredas (4000 persons) affected due to flooding from Awash river and run off from Tigray highlands, respectively.

Somali Region
Heavy rain caused flooding in Hudef and Moyale woredas. A total of 14 people have died and 525 householders have been displaced; the majority of the displaced are from Moyale

OROMIYA and SNNPR Region
An armyworm infestation has affected 38,727 hectares for crops and 15794 hectares of pasture in 104 kebeles in SNNPR and 58 kebeles in Oromiya

Oromia Region Borena Zone
A flood in Moyale affected 1937 households, 5 water points destroyed

Oromia Region West Arsi Zone
Flood and Land slide Concerns
Shalla town : 1132 people displaced, 177 housing units gone, 2 school blocks gone and other 2 blocks at high risk if it rains any time
Wondo genet, Assela town, Sero : 50 HH displaced, 500 Ha cultivated were eroded eight death of individuals

Legend

- International Boundary
- - - Regional Boundary
- - - Zonal Boundary
- Woreda Boundary
- Blue Lake
- Green Military Operation

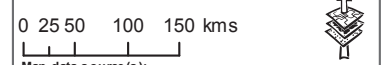
Hot Spot Areas

- White: No Data/No Humanitarian Concern
- Light Green: Close Monitoring
- Yellow: Medium Humanitarian Concern
- Orange/Red: Critical

Hot Spot Indicators – This month

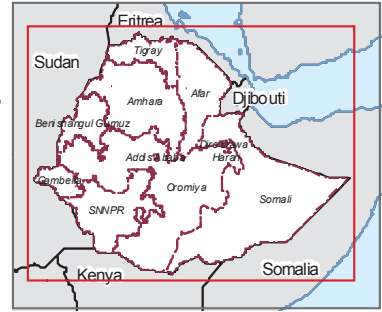
- Red Fire: AWD
- Green Malaria
- Blue Measles
- Blue Flood
- White Armyworm
- Blue Refugees/IDPs
- Red Fire Incidents
- Blue Water Shortage/WASH related concerns
- Red Food Insecurity
- Red High Malnutrition
- Blue Land Slide
- Red Border Conflict
- Red Livestock Migration
- Black Livestock Disease/Mortality due to drought
- Red House Hold Migration
- Red Approx. Pastoralist & Livestock Migration Route

Map Doc Name: 11_HS_004_National_053110_A4
Creation Date: 31 May, 2010
Web Resources: <http://ochaonline.un.org/ethiopia>
Contact address: ocha-eth@un.org



Map data source(s):
Humanitarian Partners, UNOCHA

Disclaimers:
The designations employed and the presentation of material on this map do not imply the expression of any opinion whatsoever on the part of the Secretariat of the United Nations concerning the legal status of any country, territory, city or area or of its authorities, or concerning the delimitation of its frontiers or boundaries.



Uganda

INDIANOCEAN